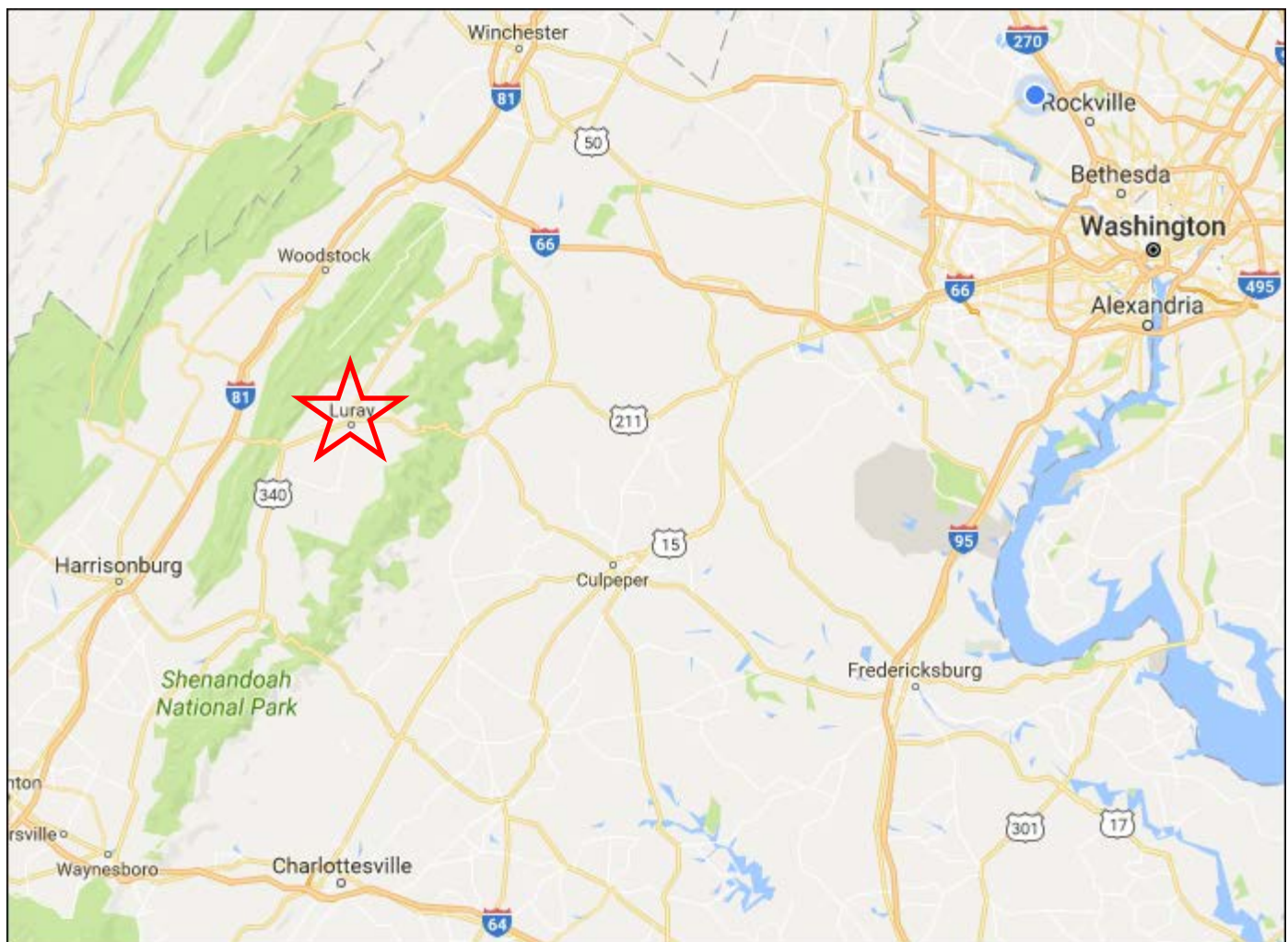


## Development Site for Sale Shenandoah Valley, Page County, Town of Luray, Virginia

- 4.8 acres – \$575,000
- Zoned B-1 Business – Townhouses allowed via Special Use Permit
- Located at corner of Memorial Drive & W. Main Street
- In front of Valley Health / Page Memorial Hospital
- Adjacent to historic [Mimslyn Inn](#)
- One mile from [Luray Caverns](#) which gets 500,000 visitors annually



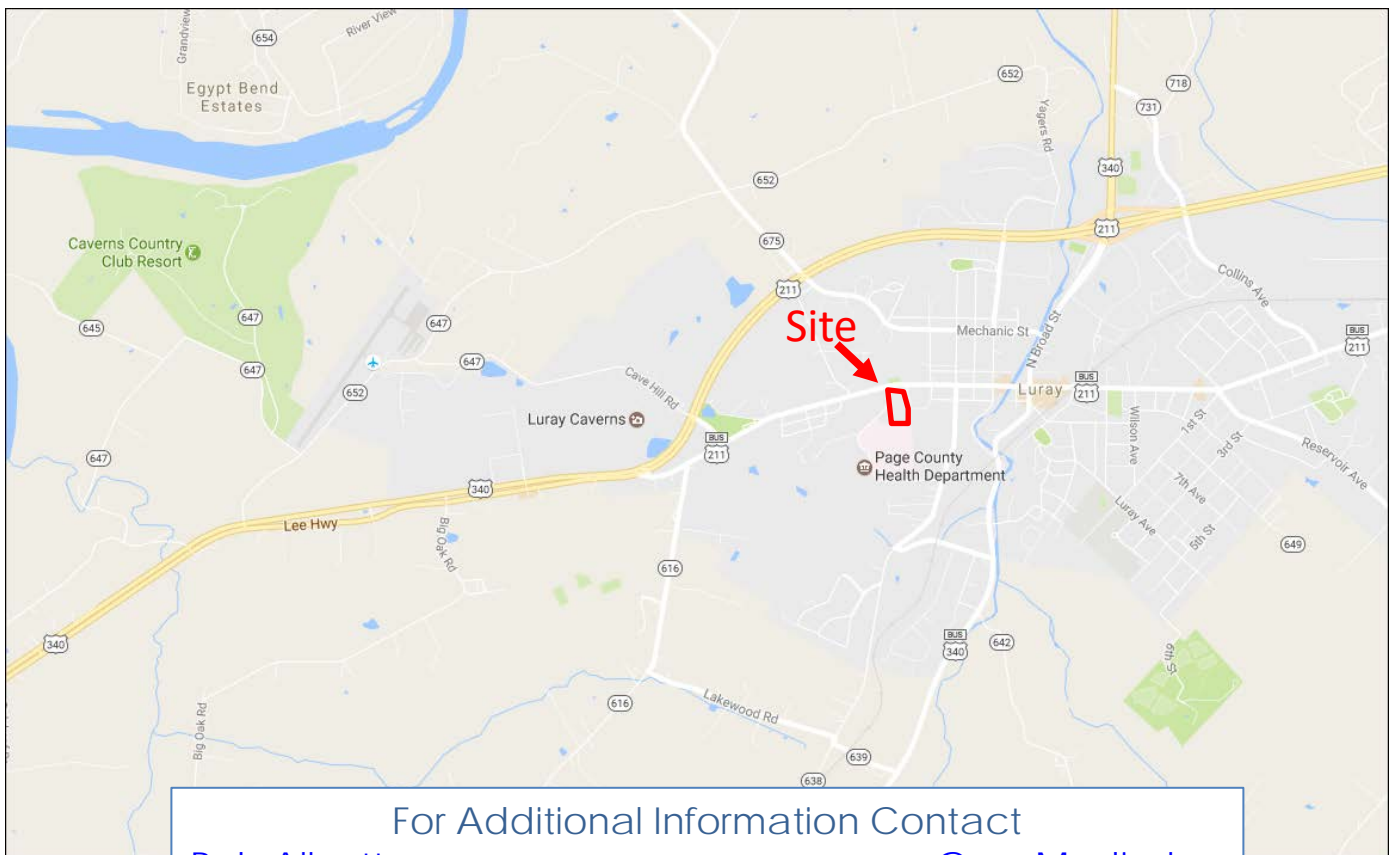
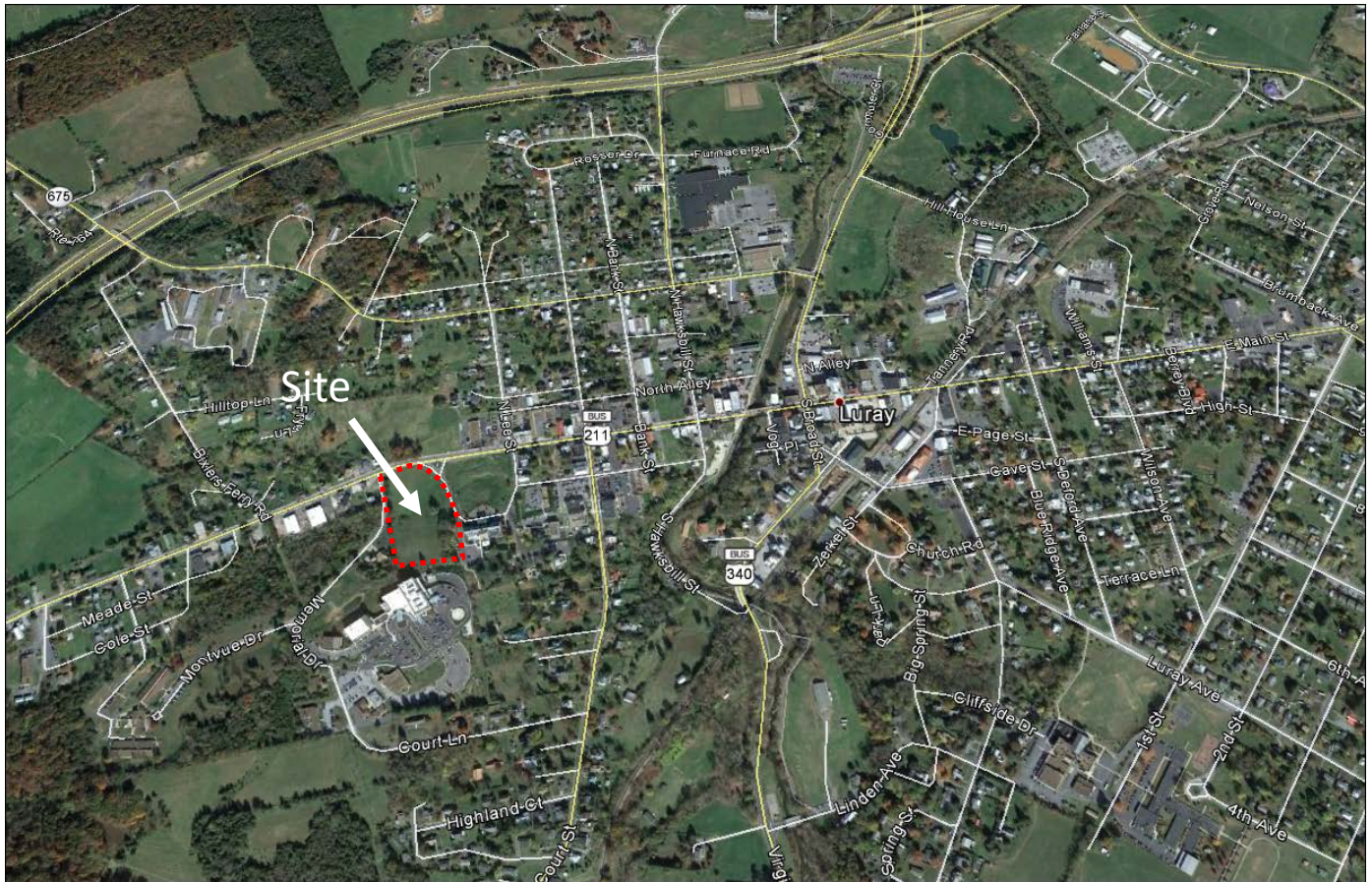
For Additional Information Contact

[Bob Allnutt](#)  
(301) 571-8202

[Gary Modjeska](#)  
(301) 571-8203



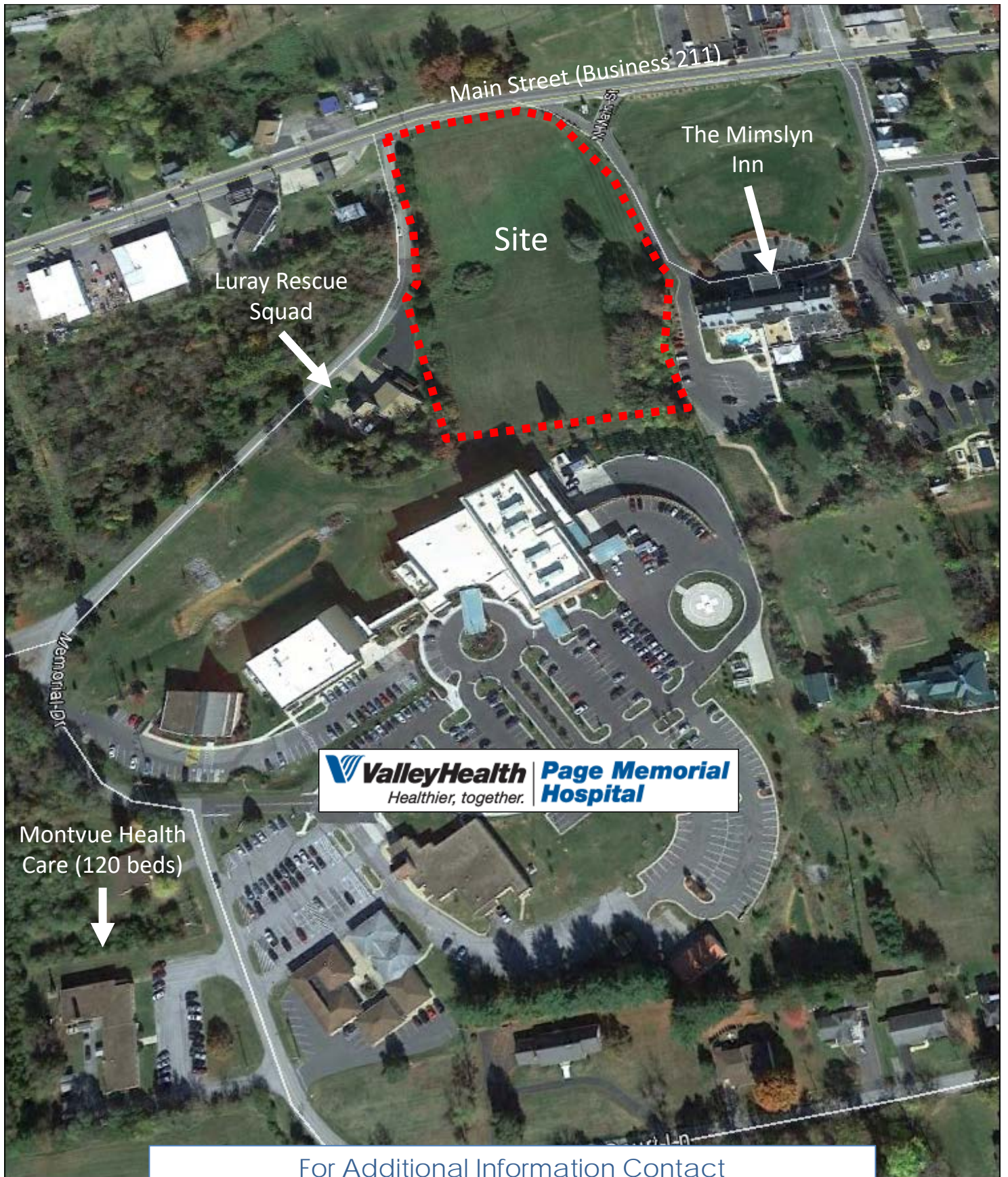
# Luray Development Site



For Additional Information Contact

<a href="mailto:Bob.Allnutt@area-properties.com">Bob Allnutt</a> (301) 571-8202	<a href="mailto:Gary.Modjeska@area-properties.com">Gary Modjeska</a> (301) 571-8203
--	--





For Additional Information Contact

<a href="#">Bob Allnutt</a> (301) 571-8202	<a href="#">Gary Modjeska</a> (301) 571-8203
---	---



# Luray Development Site



For Additional Information Contact  
[Bob Allnutt](#) (301) 571-8202  
[Gary Modjeska](#) (301) 571-8203

